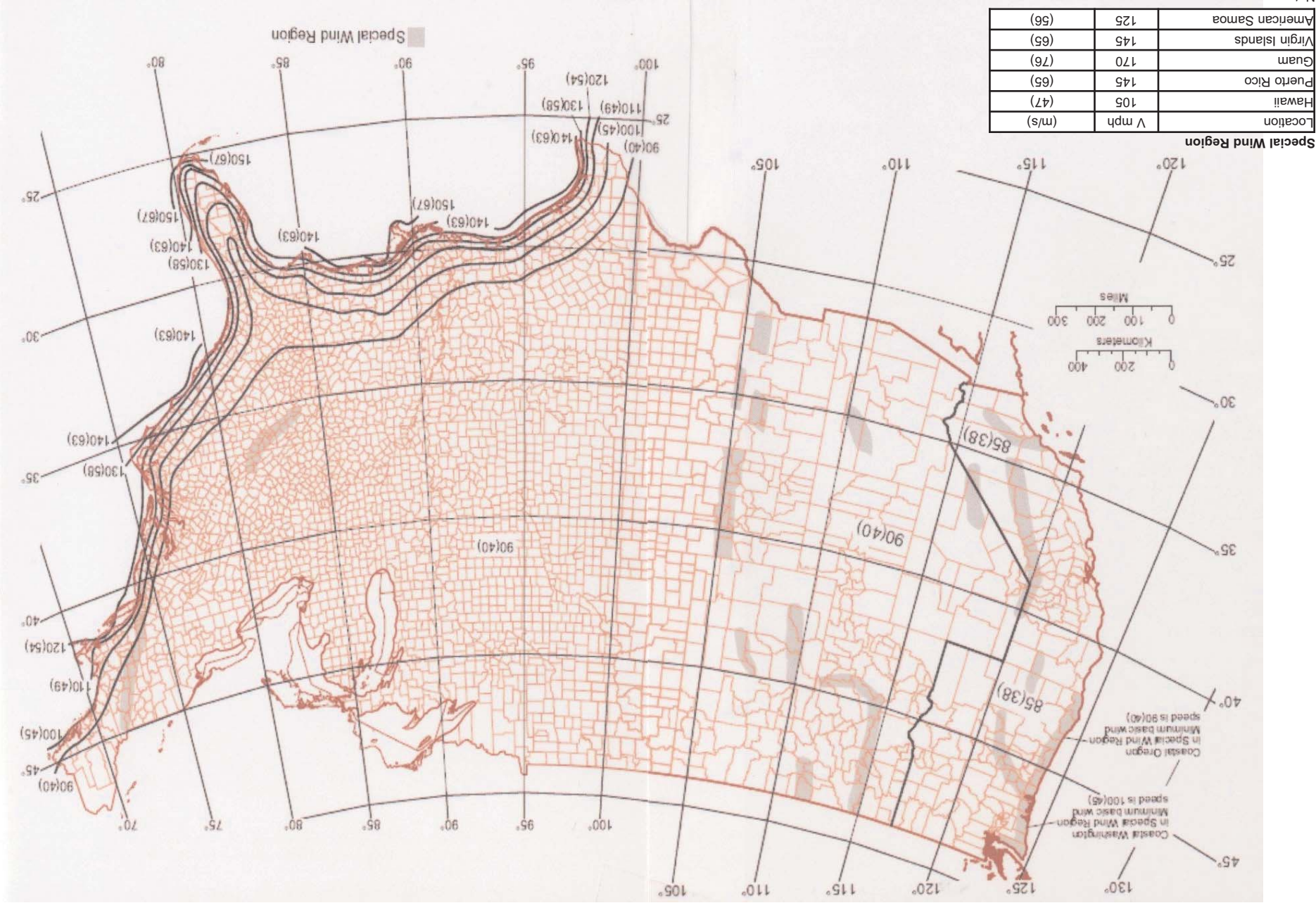


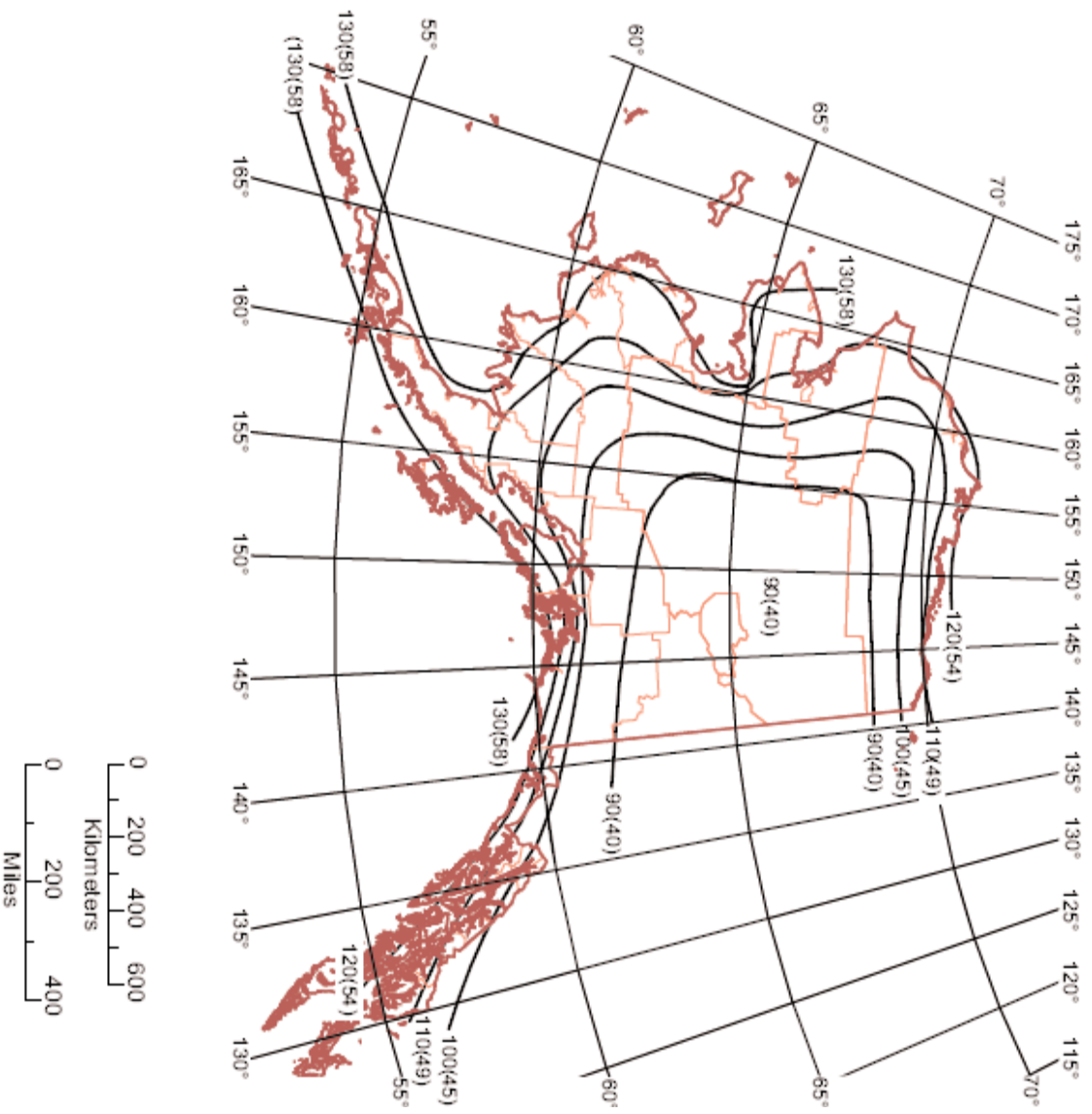
# Wind Maps



Notes:

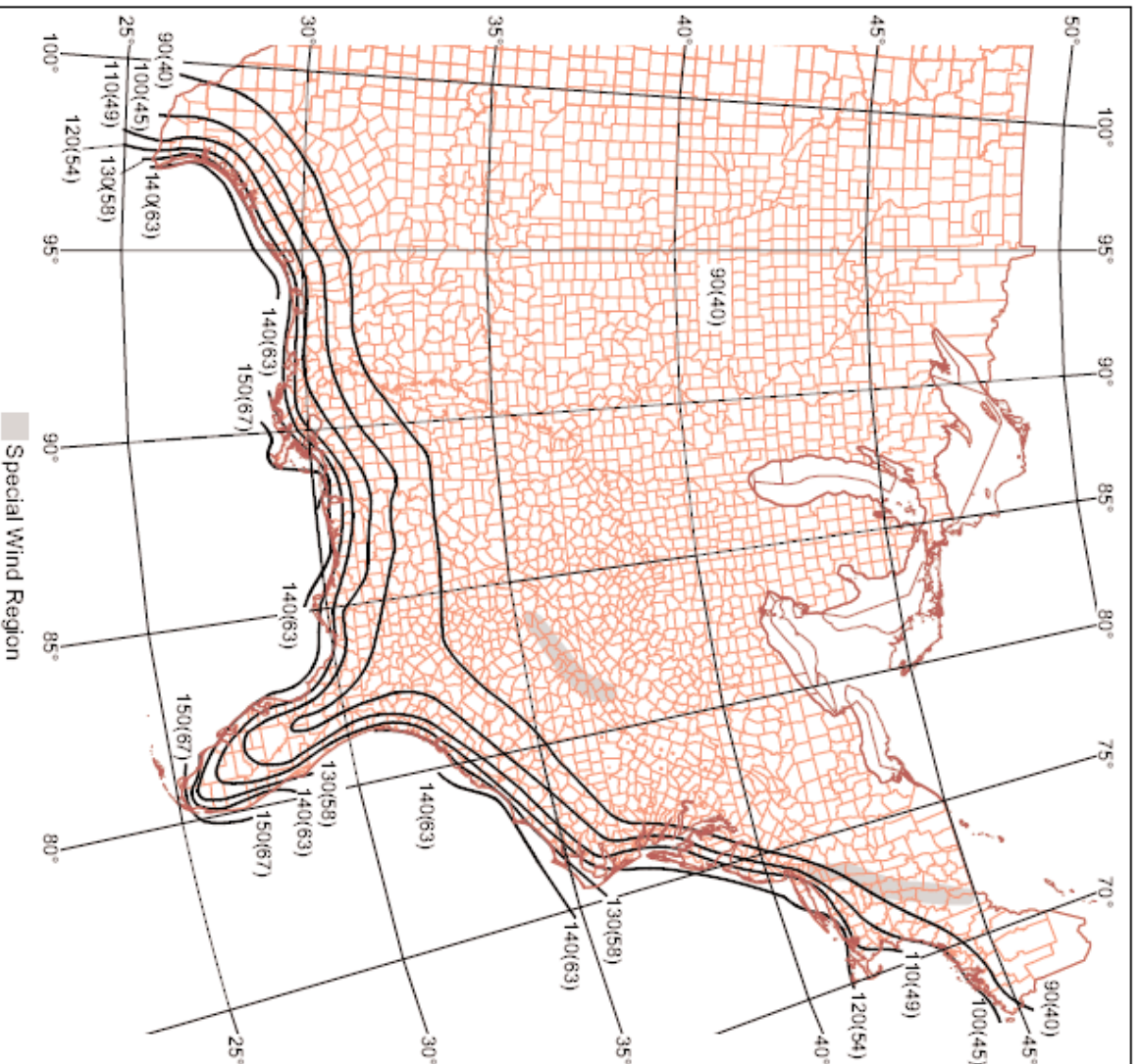
1. Values are nominal design 3-second gust wind speeds in miles per hour (m/s) at 33 ft (10m) above ground for Exposure C category.
2. Linear interpolation between wind contours is permitted.
3. Islands and coastal areas outside the last contour shall use the last wind speed contour of the coastal area.
4. Mountainous terrain, gorges, ocean promontories, and special wind regions shall be examined for unusual wind conditions.

## Wind Maps



The wind speed map shown is an element of the ANSI/ASCE 7-02 document "Minimum Design Loads for Buildings and other Structures", an American National Standards Institute Standard, copyrighted in 2002 by the American Society of Civil Engineers. Copies of this standard may be purchased from the American Society of Civil Engineers at 101 Alexander Bell Drive, Reston, VA 02019

## Wind Maps

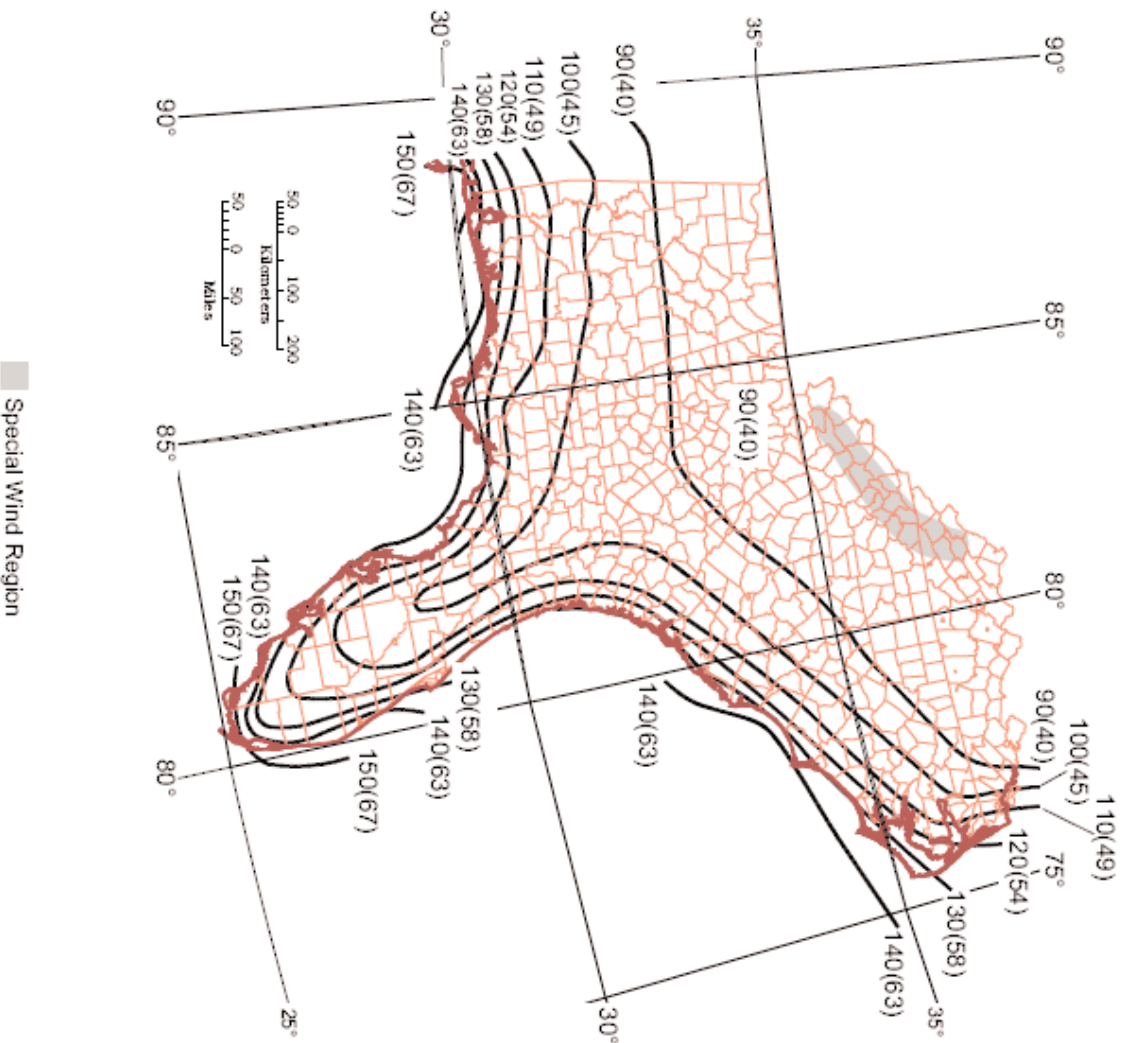


Saffir-Simpson	3-sec gust speeds	fastest-mile speeds
Category 1	88-115 mph (39-51 m/s)	74-99 mph (33-44 m/s)
Category 2	115-133 mph (51-60 m/s)	100-117 mph (45-52 m/s)
Category 3	133-156 mph (60-70 m/s)	118-139 mph (53-62 m/s)
Category 4	156-187 mph (70-84 m/s)	140-169 mph (63-76 m/s)
Category 5	> 187 mph (> 84 m/s)	> 170 mph (76 m/s)

- Notes:
1. Values are nominal design 3-second gust wind speeds in miles per hour (m/s) at 33ft (10m) above ground for Exposure C category.
  2. Linear interpolation between wind contours is appropriate.
  3. Islands and coastal areas outside the last contour shall use the last wind speed contour of the coastal area.
  4. Mountainous terrain, gorges, ocean promontories, and special wind regions shall be examined for unusual wind conditions. Seek 50-yr MRI wind speed values from local building officials. As a minimum, increase the wind speed values by 10%.

- Notes:
1. Values are nominal design 3-second gust winds speeds in miles per hour (m/s) at 33ft (10m) above ground for Exposure C category.
  2. Linear interpolation between wind contours is appropriate.
  3. Islands and coastal areas outside the last contour shall use the last wind speed contour of the coastal area.
  4. Mountainous terrain, gorges, ocean promontories, and special wind regions shall be examined for unusual wind conditions. Seek 50-yr MRI wind speed values from local building officials. As a minimum, increase the wind speed values by 10%.

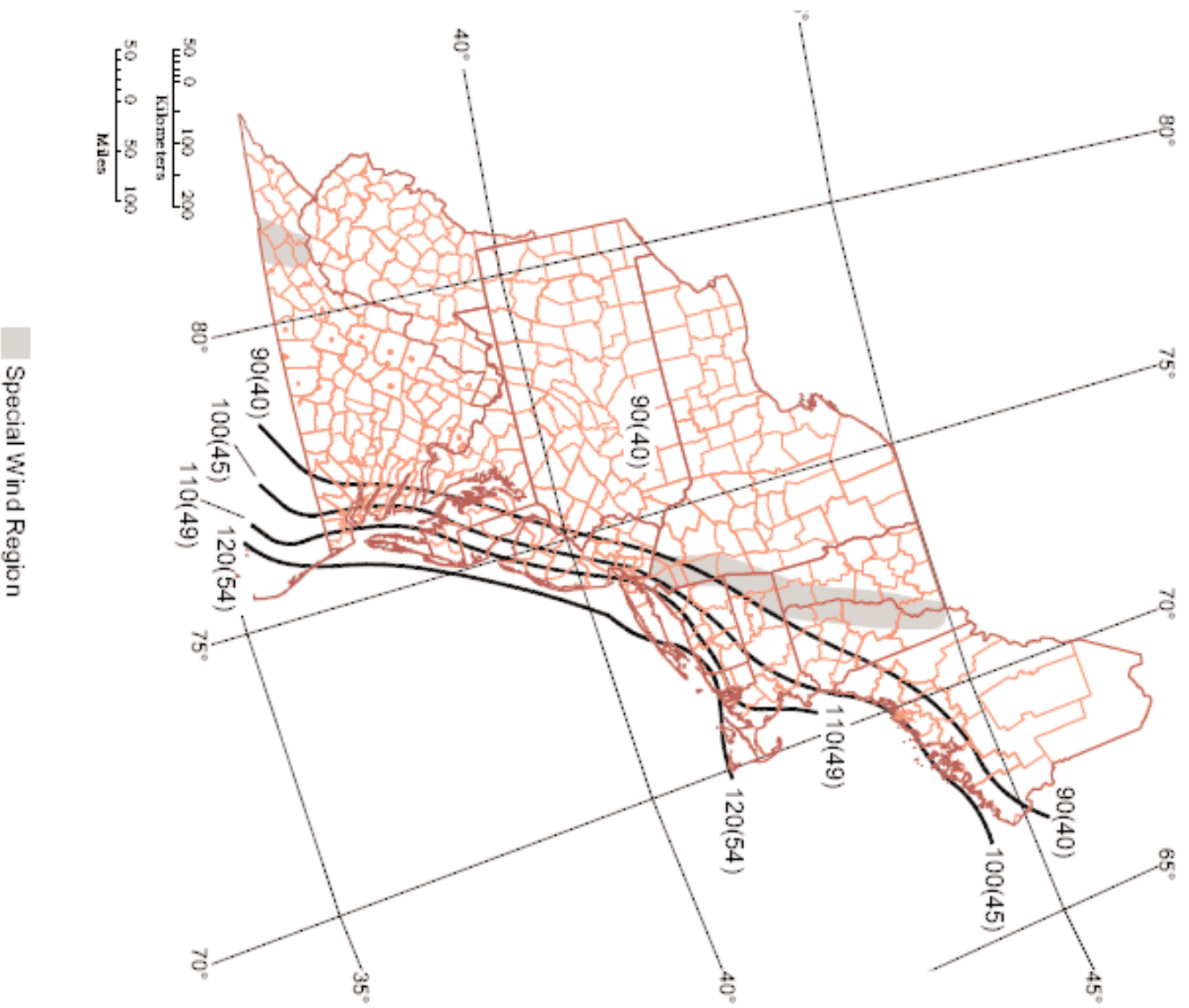
## Wind Maps



### Notes:

1. Values are nominal design 3-second gust winds speeds in miles per hour (m/s) at 33ft (10m) above ground for Exposure C category.
2. Linear interpolation between wind contours is appropriate.
3. Islands and coastal areas outside the last contour shall use the last wind speed contour of the coastal area.
4. Mountainous terrain, gorges, ocean promontories, and special wind regions shall be examined for unusual wind conditions. Seek 50-yr MRI wind speed values from local building officials. As a minimum, increase the wind speed values by 10%.

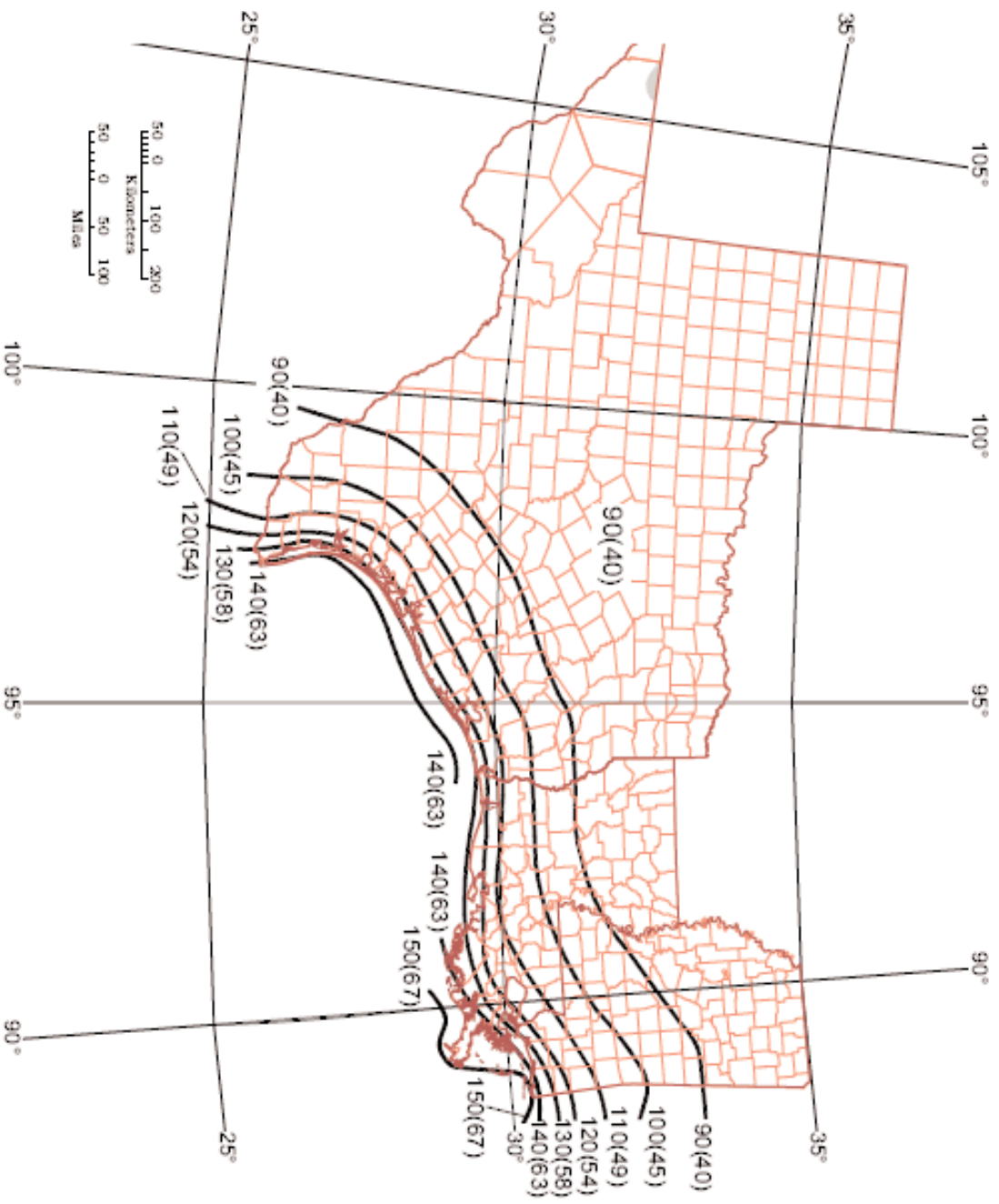
## Wind Maps



### Notes:

1. Values are nominal design 3-second gust winds speeds in miles per hour (m/s) at 33ft (10m) above ground for Exposure C category.
2. Linear interpolation between wind contours is appropriate.
3. Islands and coastal areas outside the last contour shall use the last wind speed contour of the coastal area.
4. Mountainous terrain, gorges, ocean promontories, and special wind regions shall be examined for unusual wind conditions. Seek 50-yr MRI wind speed values from local building officials. As a minimum, increase the wind speed values by 10%.

## Wind Maps



### Notes:

1. Values are nominal design 3-second gust winds speeds in miles per hour (m/s) at 33ft (10m) above ground for Exposure C category.
2. Linear interpolation between wind contours is appropriate.
3. Islands and coastal areas outside the last contour shall use the last wind speed contour of the coastal area.
4. Mountainous terrain, gorges, ocean promontories, and special wind regions shall be examined for unusual wind conditions. Seek 50-yr MRI wind speed values from local building officials. As a minimum, increase the wind speed values by 10%.