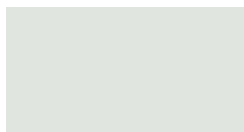


# Color Chart

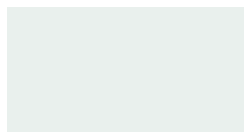
Our colors are deep, rich and true. Made of Valspar's Fluropon® High Performance Hylar 5000®/Kynar 500® finish, they offer resistance against fading and weathering. In addition to our many standard colors, custom colors are also available.



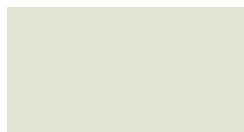
**Express Colors \***



Stone White ●



Bone White ●



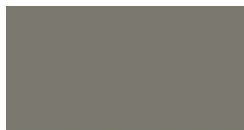
Almond ●



Sandstone ●



Cityscape ●



Slate Gray ●



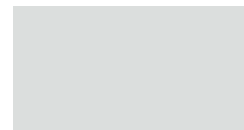
Sierra Tan ●



Medium Bronze ●



Dark Bronze ●



Clear Anodized

**Standard Colors**



Charcoal ●  
(Charcoal Gray)



Midnight (Extra Dark) Bronze



Matte Black



Burgundy (Brandywine)



Terra Cotta ●



Cardinal (Regal) Red ●



Sky (Military) Blue ●



Interstate (Regal) Blue



Teal ●



Patina Green ●



Hartford Green



Hemlock Green ●



Colonial Red ●



Forest (Sherwood) Green



Mansard Brown ●



Granite ●



Musket Gray ●



Evergreen ●



Hunter Green ●



Slate Blue ●

**Premium Colors**



(Classic) Copper Penny ●



Silver (Metallic) ●



Champagne (Metallic) ●



Zinc ●



Weathered Zinc ●



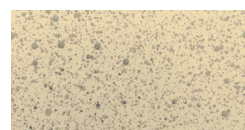
Aged Copper ●



Silversmith



Award Blue



Sand Stone ■ ★

\* = Also in Mill Finish  
 ■ = Post-Painted  
 ● = Energy Star Rated  
 ★ = Available in 3 Other Stone Colors

Note: The color chart is for reference only. For true color representation request a color chip sample.

# Quick Reference Guide

		24 ga.	22 ga.	.040"	.050"	.063"
<b>Hylar 5000®/Kynar 500®</b>	Almond	♦	♦	♦	♦	♦
	Bone White	♦	♦	♦	♦	♦
	Burgundy (Brandwine)	♦		♦	♦	
	Charcoal (Charcoal Gray)	♦	♦	♦	♦	
	Cityscape	♦	♦	♦	♦	
	Colonial Red	♦	♦	♦	♦	
	Dark Bronze	♦	♦	♦	♦	♦
	Midnight Bronze	♦	♦	♦	♦	
	Evergreen	♦				
	Forest (Sherwood) Green	♦	♦	♦	♦	
	Granite	♦	♦	♦	♦	
	Hartford Green	♦		♦	♦	
	Hemlock Green	♦		♦	♦	
	Hunter Green	♦				
	Mansard Brown	♦	♦	♦	♦	
	Matte Black	♦	♦	♦	♦	♦
	Medium Bronze	♦	♦	♦	♦	♦
	Musket Gray	♦	♦		♦	
	Patina Green	♦		♦	♦	
	Interstate (Regal) Blue	♦	♦	♦	♦	
	Cardinal (Regal) Red	♦		♦	♦	
	Sky (Military) Blue	♦	♦	♦		
	Slate Blue	♦				
	Slate Gray	♦	♦	♦	♦	
	Sandstone	♦	♦	♦	♦	♦
	Sierra Tan	♦	♦	♦	♦	♦
	Stone White	♦	♦	♦	♦	♦
	Teal	♦		♦		
Terra Cotta	♦		♦	♦		
<b>Premium</b>	Champagne Metallic	♦	♦	♦	♦	
	Copper Penny (Classic)	♦		♦	♦	
	Silver Metallic	♦	♦	♦	♦	♦
	Zinc	♦		♦	♦	
	Weathered Zinc	♦	♦		♦	
	Aged Copper	♦			♦	
	Silversmith			♦		
	Sand Stone (Spatter Coat)			♦	♦	♦
Award Blue	♦			♦		
<b>Coil Anodized</b>	Black			♦	♦	♦
	Clear			♦	♦	♦
	Dark Bronze			♦	♦	♦
	Light Bronze			♦	♦	♦

Also available: Stucco Embossed Sheets

## Please Note

Express colors available in shorter lead times for 24 ga., .040" and .050" only. Standard lead times, which may be longer, apply for 22 ga. and .063".

Protective film must be removed immediately. Please note this chart is only a representation of color options. Color matches should only be made with actual samples. Please call or write for actual metal sample(s).

These color reproductions are as accurate as modern printing technology will permit and may vary slightly from actual colors supplied. Finished color chip samples are available upon request. Customer is responsible for color selections chosen from printed literature.

Kynar 500® based fluropolymer coating is a high-grade architectural finish offering excellent resistance to degradation caused by nature's elements and airborne contaminants. A limited warranty up to 30 years is available on the prefinished coil-coated steel and aluminum colors shown.

Standard anodized finishes that utilize a continuous coil anodizing process to provide excellent color consistency from piece to piece are available. However, shade variations may occur from coil batch to coil batch. Class I batch anodizing is also available.

As noted, many colors are energy star rated. Emissivity uses ASTM C1371. Reflectivity uses ASTM C1549.

Kynar 500® is a registered trademark of Arkema, Inc. Valspar is a registered trademark of Valspar Sourcing, Inc.

Due to product improvements and changes, we reserve the right to change or delete information herein without prior notice.

©2019. All statements herein are expressions of opinion, which by performance and testing are believed to be accurate and reliable, but are presented without guarantee or responsibility on our part. Statements concerning possible use of our products are made without any knowledge that such recommended uses may infringe any patent. No warranty, express or implied, is made or intended.

**\* See the Paraguard Roof Perimeter Systems Inclusion Addendum for coverage and restrictions.**